

MAXVU rail

DIN-rail Temperature Controller/Transmitter and Limiter



MAXVU Rail is a compact DIN-rail mount temperature controller/transmitter and limiter range for general industrial and scientific equipment requiring a reduced back panel footprint, centralized control or minimal front panel components.

The slim 22.5mm width behind panel devices are quick to integrate in a system and easy to set-up, the affordable product family offers;

- **PID controller** for stable and efficient temperature and process control
- **Transmitter function** for monitoring and data collection of process measurements
- FM approved **limit device** for machine protection

Reduce setup time

Clear text/graphic display

MAXVU Rail incorporates the latest Oled technology display for high contrast text/graphic display with a wide viewing angle, easily visible to configure in bright sunlight or a dark control panel.

Short set up menu

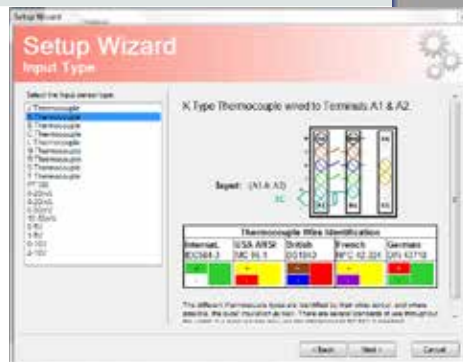
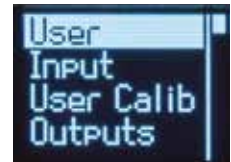
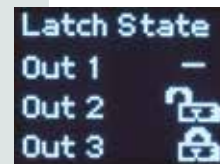
MAXVU Rail has been specially designed for ease-of-use through a quick setup menu accessed from the front keypad.

- Includes the most common parameter settings
- Prioritized parameter options, default is the most common option with second most common next on the list
- Other parameters still available through the full menu

PC Configuration software

Alternatively, fast configuration of instruments can be achieved with the MAXVU software via the controller's front access configuration port

- Logical menu driven interface
- Tables with drop down menus
- Graphical setup wizard with informative help panel
- Save configuration files
- Print report of controller settings



Key Features

CONTROL

PID / ON-OFF / limit / transmitter
Heat / cool strategies
2 alarms - latching
Ramp/dwell with delay time

HMI

Text /graphic Oled display
3 LED status indicators

PROGRAMMING

Front keys or software programming

OUTPUTS

2 or 3 outputs; relay, SSR or linear (1 max)
Linear ranges: 0/4 to 20mA, 0/1 to 5V, 0/2 to 10V

MECHANICS

DIN rail, 22.5mm width
RS485 comms bus connector
option (reduces wiring)

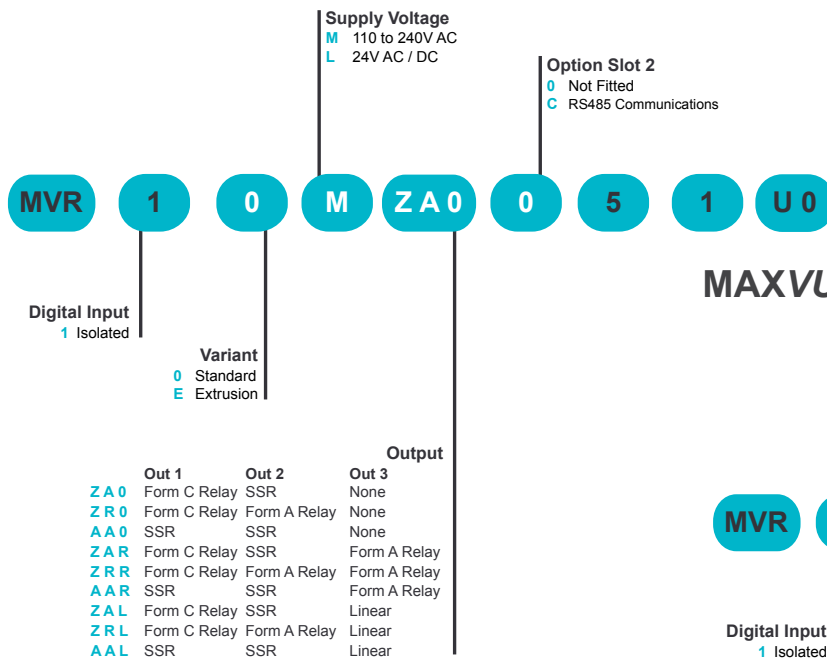
INPUTS

Thermocouple: B, C, J, K, L, N, R, S, T,
RTD: PT100 2 or 3 wire,
Linear ranges: 0/4 to 20mA, 0/1 to 5V, 0/2 to 10V
Calibration: 1 or 2 point
Digital input: Isolated

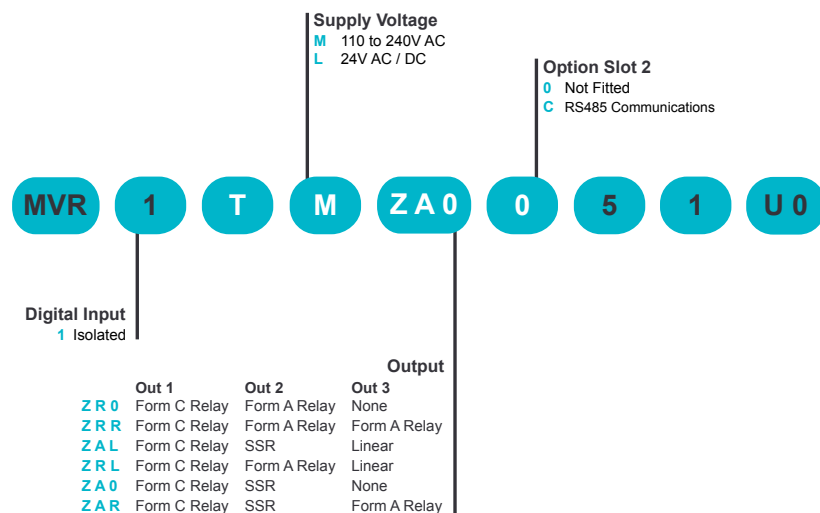


Ordering Codes

MAXVU Rail Controller / Transmitter



MAXVU Rail Limiter



Flexible for Use in a Range of Applications

MAXVU Rail provides an affordable solution for applications needing essential temperature control.

Heated Enclosures



Kilns

Warming / Chilled Cabinets

Ovens

Incubators

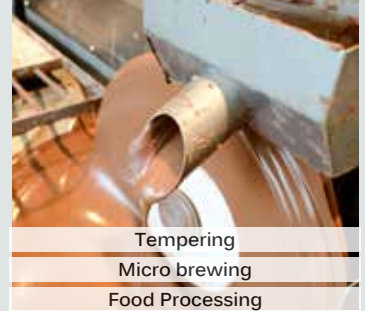
Plastic & Rubber Extrusion



Barrel Heating

Die Heating

Food and Beverage

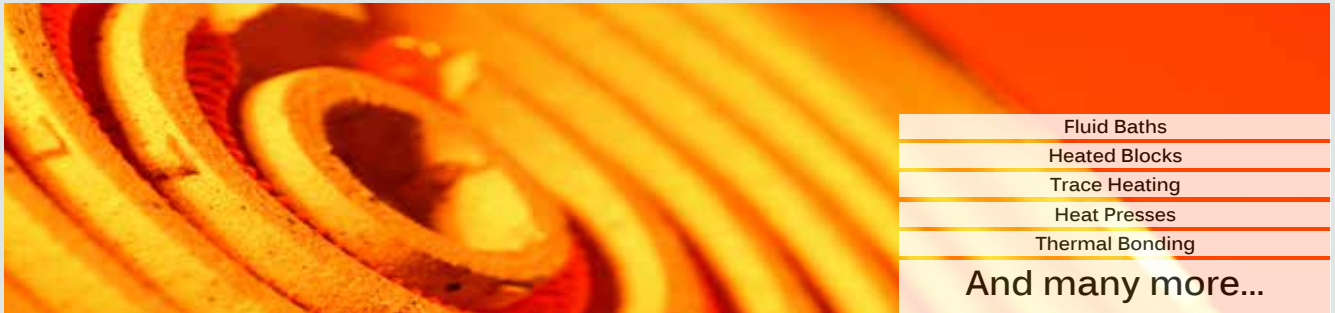


Tempering

Micro brewing

Food Processing

General Heat Processes



Fluid Baths

Heated Blocks

Trace Heating

Heat Presses

Thermal Bonding

And many more...

Contact Us



Email: inquiries@west-cs.com
Website: www.west-cs.com



Telephone: +1 800 866 6659
Fax: +1 847 782 5223



Address: West Control Solutions
1675 Delany Road
Gurnee
IL 60031
USA

BR-MVR-1-US-1705