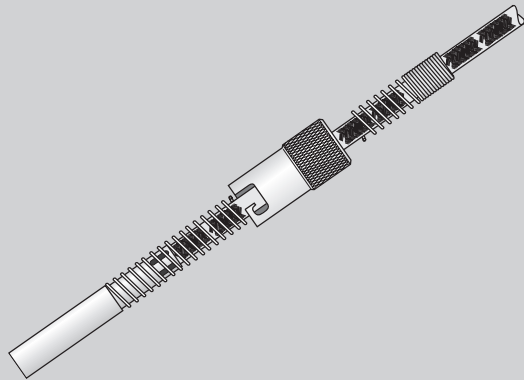




Special-RTD-Pt100



**Measuring resistor Pt100 DIN IEC,
class B, 2-wire configuration**

For Plastics Industry

Various mountings

Accessories

TECHNICAL DATA

RESISTANCE THERMOMETER G1

Insertion length

adjustable

Mounting

Spring loaded bayonet-type

Materials

Bayonet: Chrome plated brass
Spring: Rust proof steel 1.4310
Threaded fitting: galvanized steel

Connecting lead

PFA insulated Cu-leads twisted with glass silk and armoured with stainless steel mesh.

Loop resistance: approx. 0,44 Ω/m

Length: 3 m

Operating temperature: up to 285 °C

Mounting

Well hole: 8,2 mm Ø,
Depth: recommended > 40 mm
see fig. 1, 4 ff

RESISTANCE THERMOMETER G2

Insertion length

42 mm

Mounting

pushed into well

Connecting lead

PFA insulated Cu-leads twisted with glass silk.

Loop resistance: approx. 0,44 Ω/m

Length: 3 m

Operating temperature: up to 285 °C

Mounting

Well hole: 5,2 mm Ø,
further dimensions see fig. 2

SHORT-RESISTANCE THERMOMETER

Insertion length

adjustable

Mounting

Spring loaded bayonet-type

Materials

Bayonet: Chrome plated brass
Spring: Rust proof steel 1.4310
Threaded fitting: galvanized steel

Connecting lead

PFA insulated Cu-leads twisted with glass silk and armoured with stainless steel mesh.

Loop resistance: approx. 0,44 Ω/m

Length: 3 m

Operating temperature: up to 285 °C

Mounting

Well hole: 8,2 mm Ø
φυρτηρ διαμεσίων σε φιλ. 3

Fig. 1 Special resistance thermometer G1

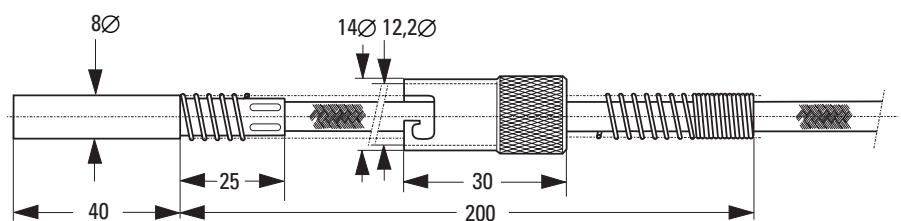


Fig. 2 Special resistance thermometer G2

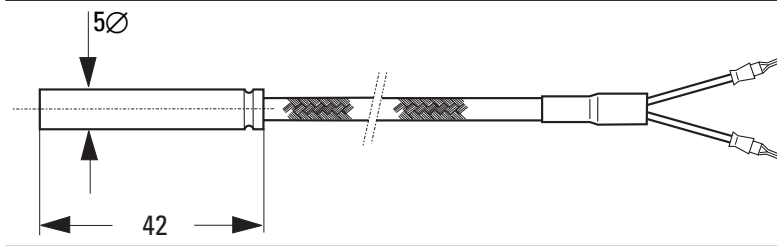


Fig. 3 Special-short-resistance thermometer

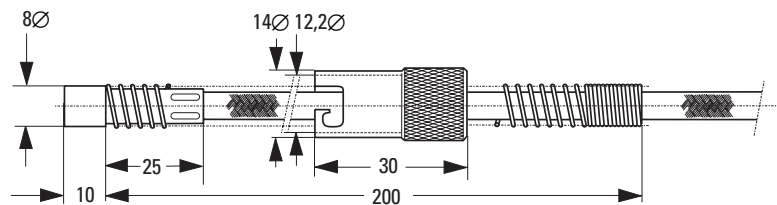


Fig. 4 Threaded fitting 25 mm, R3/8"

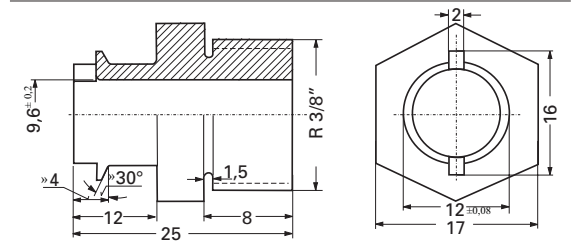
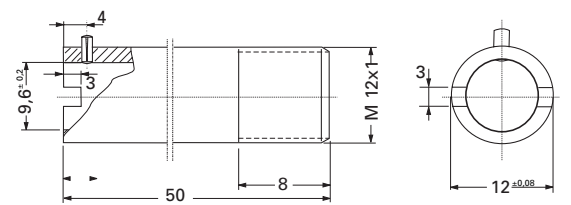


Fig. 5 Threaded fitting 50 mm, M12 x 1



SCREW-IN-RESISTANCE-THERMOMETER

with small terminal head

Mounting

Boss: G 1/2 A

Protection tube: 7 mm, 1.4571

Nominal length: 50 or 100 mm

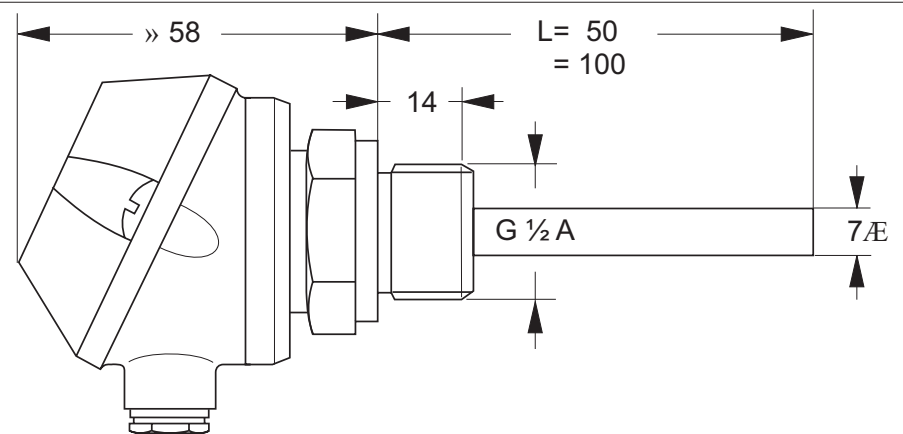
Operating temperature

see operating pressure

Operating pressure

46 bar at 400 °C, 56 bar at 200 °C

Fig 6 Screw-in resistance thermometer



ORDERING INFORMATION

Thermometer type	Maximum temp. at tip	Maximum temp. at conn. cable	Weight	Fig.-no.:	Order-number
G1	400 °C		0,1 kg	1	9404-126-02301
G2	285 °C	250 °C	0,05 kg	2	9404-126-20301
Short	285 °C		0,1kg	3	9404-126-32301
Screw-in- 50 mm	400 °C	-	0,15	6	9404-126-51031
Screw-in- 100 mm	400 °C	-	0,17 kg	6	9404-126-51471

Threaded fitting		Fig.-no.:	Order-number
Tapping			
M12		4	4012-142-41181
R 3/8		5	4012-142-30851



Deutschland

PMA Prozeß- und Maschinen- Automation GmbH
Miramstrasse 87, D-34123 Kassel

Tel./Fax: (0561) 505 - 1307/-1710
E-mail: mailbox@pma-online.de
Internet: http://www.pma-online.de

Your local distributor